

Traditional Australian products  
built to withstand traditional  
Australian weather.



**REAL-CRETE**<sup>®</sup>  
creative outdoor solutions

Retaining Wall Installation Guide

# This easy to understand installation information will guide you on your Real-Crete® Sleeper Selection

Our Real-Crete® Concrete Sleepers are steel reinforced to engineered specifications to suit almost any retaining wall height.

## Sleeper Dimensions and Weights

### Small Wall Sleepers (SW80)

- 1800mm x 205mm x 80mm (approx) weight 60 kgs (approx)  
(used in small retaining walls up to 800mm in height, and as steps, stepping stones, garden edgings, vegie gardens etc)

### Structural Sleepers (S80)

- 1800mm x 205mm x 80mm (approx) weight 60kgs (approx)  
(Used in retaining walls 1.0m – 1.4m in height)

### Heavy Duty Structural Sleepers (HDS80)

- 1800mm x 205mm x 80mm (approx) weight 65kgs (approx)  
(Used in retaining walls 1.6m – 2.4m in height)

### Extra Heavy Duty Structural Sleepers (HDS100)

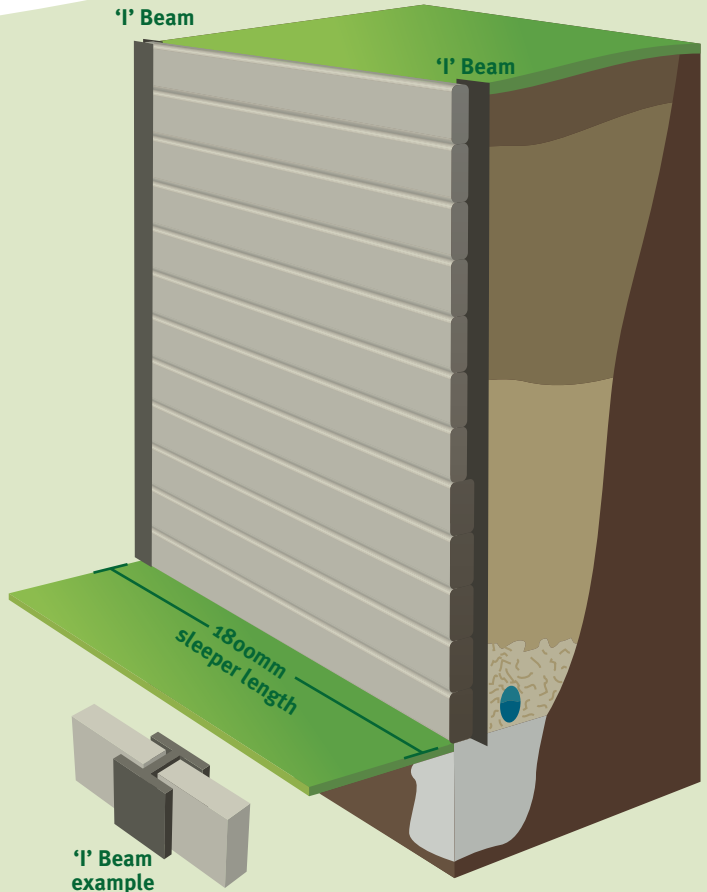
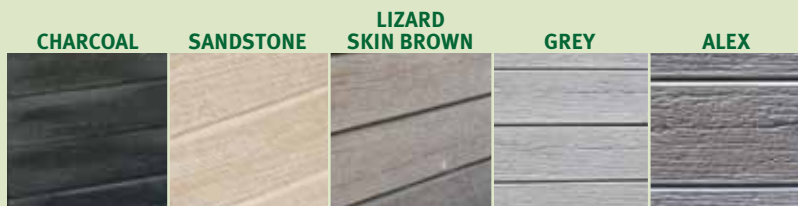
- 1800mm x 205mm x 100mm (approx) weight 80kgs (approx)  
(Used in retaining walls greater than 2.4m in height)

### Note;

- 1830mm is the maximum steel "I" Beam Post Centres

## Real-Crete® Colour Selection

Real-Crete® Concrete Sleepers can be manufactured in a selection of colours. Our four most popular colours are shown below. The colours are chemical bound throughout the concrete mixture at construction time ensuring that the colour is throughout the product – not painted on the outside.



Real-Crete® can also complete the installation for you.

Please note; Colours may vary slightly from sleeper to sleeper due to concrete pouring and curing processes. Some colours may 'salt' slightly. Due to current printing techniques, colours may vary. We recommend looking at real products to fully understand the colour selection before purchasing



SDC Landscaping Products Pty Ltd  
ACN: 152 363 767 ABN: 30 152 363 767

Mobile: 0400 693 509  
Email: [sdclandscaping@gmail.com](mailto:sdclandscaping@gmail.com)

