

PRODUCT SELECTION GUIDE

SURFACE MATERIALS

	Stain-Proof Marble & Porcelain Ole-Repella	Dry-Treat 100N	Dry-Treat Cream	Dry-Treat 40N	Dry-Treat 40SK	Water-Repella Colour Treat	Enhance-Sealer Enhance-Sealer SB Paver-Seal	S-P Cleaner X-Duty Cleaner
ENGINEERING CONCRETE	◆	◆	◆	◆	◆	◆	◆	◆
TERRACOTTA TILE	◆	◆	◆	◆	◆	◆	◆	◆
CAST STONE	◆	◆	◆	◆	◆	◆	◆	◆
PAVING	◆	◆	◆	◆	◆	◆	◆	◆
SANDSTONE	◆	◆	◆	◆	◆	◆	◆	◆
LIMESTONE	◆	◆	◆	◆	◆	◆	◆	◆
BRICK	◆	◆	◆	◆	◆	◆	◆	◆
BRICK	◆	◆	◆	◆	◆	◆	◆	◆
SLATE	◆	◆	◆	◆	◆	◆	◆	◆
MARBLE	◆	◆	◆	◆	◆	◆	◆	◆
GRANITE	◆	◆	◆	◆	◆	◆	◆	◆
PORCELAIN	◆	◆	◆	◆	◆	◆	◆	◆
TERRAZZO	◆	◆	◆	◆	◆	◆	◆	◆
VITREOUS TILE	◆	◆	◆	◆	◆	◆	◆	◆
GROUT	◆	◆	◆	◆	◆	◆	◆	◆
Repels food and oil-based products to ISO 10545-14	◆	◆	◆	◆	◆	◆	◆	◆
Reduces water ingress up to 98%	◆	◆	◆	◆	◆	◆	◆	◆
Penetrates into the surface - no film	◆	◆	◆	◆	◆	◆	◆	◆
Suitable for outdoor and indoor (UV stable)	◆	◆	◆	◆	◆	◆	◆	◆
Keeps the original surface look	◆	◆	◆	◆	◆	◆	◆	◆
Consolidates porous materials	◆	◆	◆	◆	◆	◆	◆	◆
Reduces moss and mould growth	◆	◆	◆	◆	◆	◆	◆	◆
Minimises freeze thaw	◆	◆	◆	◆	◆	◆	◆	◆
Improves acid resistance	◆	◆	◆	◆	◆	◆	◆	◆
Reduces salt efflorescence	◆	◆	◆	◆	◆	◆	◆	◆
Reduces water-born salt ingress up to 98%	◆	◆	◆	◆	◆	◆	◆	◆
Alkali resistant	◆	◆	◆	◆	◆	◆	◆	◆
Water-vapour permeable - breathable	◆	◆	◆	◆	◆	◆	◆	◆
Reduces alkali silica reaction in concrete	◆	◆	◆	◆	◆	◆	◆	◆
Glossy surface sealer	◆	◆	◆	◆	◆	◆	◆	◆
Enriches the colour	◆	◆	◆	◆	◆	◆	◆	◆
Water-based	◆	◆	◆	◆	◆	◆	◆	◆
Seals cracks up to 0.3 mm (0.012 inch)	◆	◆	◆	◆	◆	◆	◆	◆
Solvent-free cream	◆	◆	◆	◆	◆	◆	◆	◆
Warranty of 30 years	◆	◆	◆	◆	◆	◆	◆	◆
Warranty of 15 years	◆	◆	◆	◆	◆	◆	◆	◆
Life expectancy more than 5 years	◆	◆	◆	◆	◆	◆	◆	◆
Life expectancy less than 5 years	◆	◆	◆	◆	◆	◆	◆	◆
Removes grout residue	◆	◆	◆	◆	◆	◆	◆	◆
Graffiti and stain cleaner	◆	◆	◆	◆	◆	◆	◆	◆
"Shampoo conditioner" for sealed surfaces	◆	◆	◆	◆	◆	◆	◆	◆
Typical application rate per sq. metre per litre	2-8 10-30 2-6	1.66 2-4 2-6 1-5 2-6 1-5	4-8 4-8 4-8	100 5-10				
Typical application rate per sq. foot per quart	20-80 100 20-60 to 300	17 20-40 10-50 20-60 20-60	40-80 40-80 40-80					

AUTHORISED DISTRIBUTOR

Dry-Treat (Australia) Pty Ltd

220 Pacific Highway, Crows Nest, NSW AUSTRALIA 2065

Postal address: PO Box 551 St Leonards NSW 1590

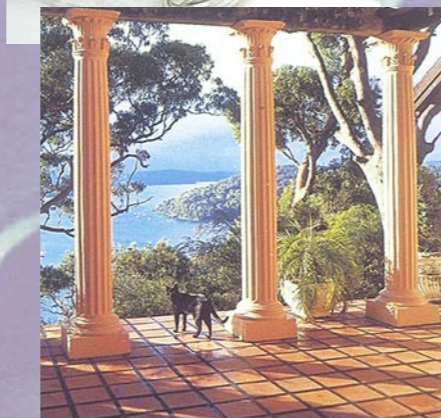
Free Call (AUS): 1800 675 119

Free Call (USA): 1866 667 5119

Free Call (NZ): 0800 540 320

Free Call (UK): 0800 096 4760

www.drytreat.com



HEALTH AND SAFETY

You must follow all health cautions and other instructions on You must follow all health cautions and other instructions on product labels. Sealers and cleaners must be applied and stored exactly as described on the product label.

Important notice to purchasers: All statements, technical information and recommendations contained herein are based on information and tests we believe reliable. The accuracy or completeness thereof is not guaranteed.

**15
YEARS
WARRANTY***

STAIN proof

PENETRATING SHIELD

FOR POROUS TILES, STONE, PAVERS AND GROUT

- ◆ Provides a barrier to surface staining.
- ◆ Protects against efflorescence and salt attack.
- ◆ Reduces moss and mildew and makes cleaning easier - can use common cleaners.
- ◆ Retains natural look and is suitable for indoor and outdoor use.

Another innovative product from Dry-Treat Australia

DRY treat

DRY-TREAT ARE GLOBAL LEADERS IN THEIR FIELD

Dry-Treat products provide an impregnating, invisible and breathable barrier which protects porous tile, natural stone, pavers and grout from damage caused by water, water-borne salts, graffiti and oil based stains.

We are global leaders.

STAIN-PROOF

Our flagship product, Stain-Proof, is an impregnating, invisible and breathable sealer which guards against staining. Unlike surface sealers, it works without changing surface colours and textures. Stain-Proof reduces water up-take and chloride ion ingress by up to ninety eight percent. It also greatly reduces:

- ◆ Moss and mould growth;
- ◆ Salt efflorescence;
- ◆ Freeze thaw spalling;
- ◆ Oil and food staining;
- ◆ Cleaning time;
- ◆ Weathering and wearing.

WIDE APPLICATION RANGE

Stain-Proof is ideal for terracotta tiles, cast stone, pavers, sandstone, brick, concrete, marble, granite, limestone and grout.

EASY TO MAINTAIN

Treated indoor or outdoor surfaces become easier to clean and maintain, and keep looking good for longer.

DO IT YOURSELF

There are no involved procedures, it's easy to do-it-yourself. Always test a small area first and allow 24 hours to cure. Full application instructions can be found on product labels.

FIFTEEN YEAR WARRANTY

A fifteen year performance warranty is provided when Stain-Proof is applied by an accredited applicator according to our written instructions and maintained according to our recommended maintenance system.

ACCREDITED APPLICATORS

Dry-Treat can provide you with a list of specially trained and accredited applicators so that you can qualify for the Stain-Proof Warranty



CHOSEN BY INDUSTRY

Over the last fifteen years, engineering structures – particularly marine structures such as bridges, wharves, building facades and engineering concrete, have received maximum protection with Dry-Treat products.

GREAT FOR HOME

Dry-Treat products are great around the home, and can be used on floors, walls, swimming pool surrounds, patios, garages, kitchens, bathrooms and entertaining areas.

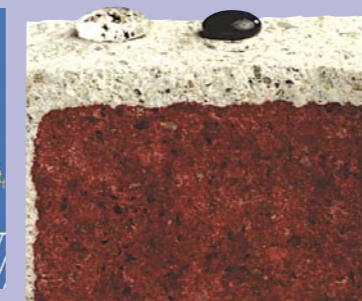
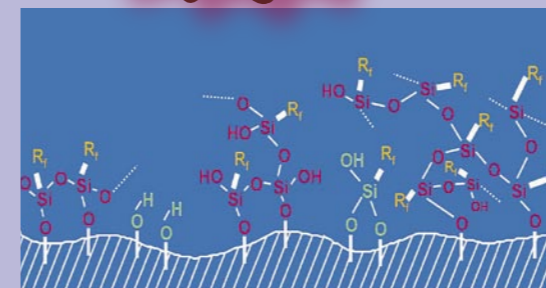


WE STAND BEHIND OUR WARRANTY

Our 15 year Performance Warranty is provided, in writing, when Dry-Treat products are applied by an *Accredited Applicator according to our written instructions and maintained in accordance with our recommended maintenance system.

All spills should be cleaned up immediately to minimize absorption. Some Dry-Treat products are now also available in easy to use spray cans as well as a range of container sizes.

*Dry-Treat can supply a list of approved and Accredited Applicators.



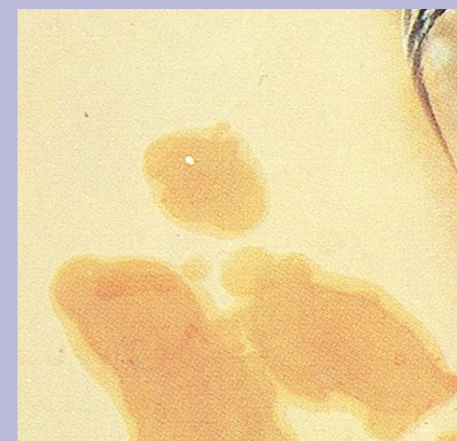
HOW DRY-TREAT PRODUCTS WORK

All materials have a surface energy that binds them together. This energy is the result of intermolecular forces. Porous building materials are damaged by the presence of liquids that convey destructive agents such as water, salts and stains into their capillary system.

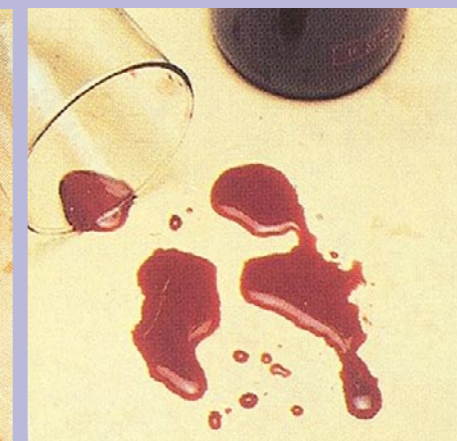
Our penetrating sealers work by altering the natural surface energy of porous building materials by means of a chemical reaction. This greatly reduces the capillary absorbency of the porous material without clogging the pores, so breathability remains unchanged.

The molecules of the sealer bond onto the microscopic lattice of the porous building material, giving the treatment a longer life. Depending on which product is used, the building material can now repel water, water-borne salts or oil-based stains.

For detail product and technical information please refer to our web site.



Normal surface absorbs and stains result



Dry-treat surface resists penetration

MORE GREAT PRODUCTS

MARBLE AND PORCELAIN SHIELD (PORCELAIN SEALER)

Protects marble, porcelain and low absorbent dense stone from damage caused by water, water-borne salts, graffiti and oil-based stains.

OLE-REPELLA

Water based Ole-Repella provides protection against stain damage for medium to very porous concrete, terracotta tile, cast stone, pavers, sandstone, limestone, brick, block, render and grout.

WATER-REPELLA

Water-Repella provides protection against water and salt damage for medium to very porous concrete, terracotta tile, cast stone, pavers, sandstone, limestone, brick, render and grout.

DRY-TREAT 100N

This specialist product reduces the ongoing maintenance costs for engineering concrete. Its ideal for marine environments.

DRY-TREAT 40N

It is ideal for marine environments. It is available as a liquid or a cream. A corrosion inhibitor additive can also be added to the product.

ENHANCE-SEALER

Enhance Sealer provides enrichment of colour and stain protection.

S-P CLEANER

This general purpose cleaner lifts dust and dirt from sealed surfaces. It is available as a concentrate which can be diluted with water or as a ready to use pump pack.

X-DUTY

This high performance cleaner lifts difficult stains and graffiti from most surfaces. It is low odour and biodegradable.

COLOUR-TREAT

Colour-Treat provides permanent colouring and protection for porous building materials. This unique treatment alters the colour of surfaces without creating a 'painted' appearance. It can be applied to a wide variety of surfaces and is ideal for disguising colour variations.